

New Medium Pressure Filters MDF and MDFF in L-Design

Description

HYDAC extends its product range of medium pressure filters MDF and MDFF (for reversible oil flow) by the new sizes 300, 450, 650 and 900 (corresponding 4", 8", 13" and 16").

They are 1:1 interchangeable to competition filters and have an L-design filter head.

The filter elements are fitted with the established HYDAC Betamicon®4 Technology with improved separation performance and dirt holding capacity.

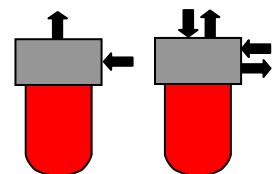
Technical Details

Max. Operating. Pressure:	420 bar (at least 250000 cycles)
Fatigue Strength:	0-280 bar (at least 10 ⁶ cycles)
	0-420 bar (at least 250000 cycles)
Max. Flow:	380 l/min
Connection:	G1, G1¼, G1½
Bypass Valve:	optional
No Element Valve:	optional



Advantages

- **Filters and elements are 1:1 interchangeable to competition,**
i.e. the use of the established HYDAC quality is possible without any re-fitting efforts or expenses.
- **Wider product range for our customers,**
since it complements the inline filter program of the MDF and MDFF range.
- **High Safety**
The No Element Valve (-NEV) locks the flow way in case of no element is installed and protects against dirt inlet, since dirty oil cannot get into the system.
- **Various applications and compact installation**
through the new filter head in L-design.



Applications

Mining and tunnel construction, presses, die casting and plastic injection molding machines, controls of steel mills and power plants.

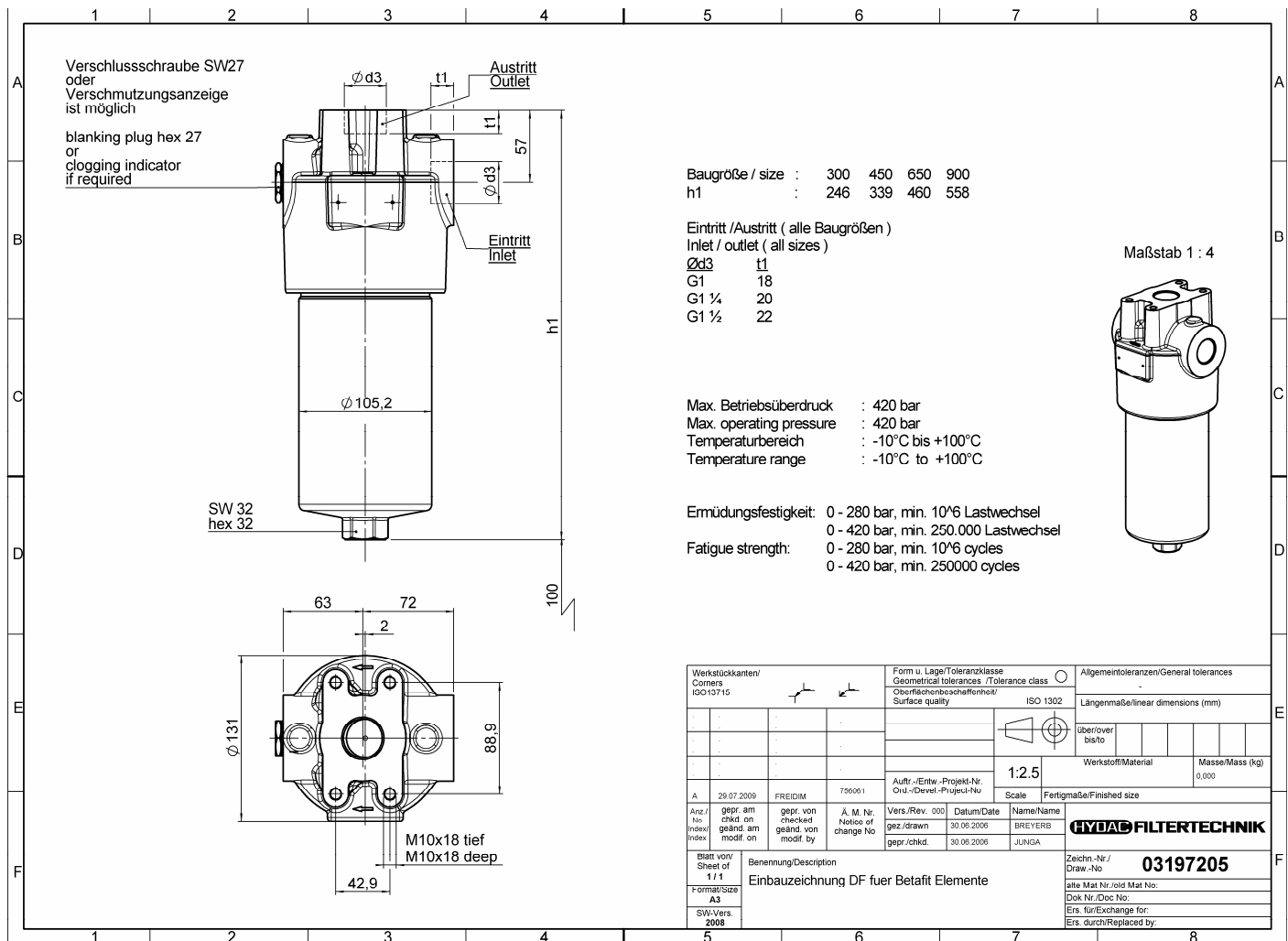
New Medium Pressure Filters MDF and MDFF in L-Design

Type Code

Type	Filter material	Size	Pressure	Head Design	Connection	Filtration Rating	Clogging Indicator Design *	Type number	Changing Number	Supplementary Details
MDF	BN/HC	300 (4"-Length)	O = 280 bar	L = flow direction in L-design	D = G1	3	Y = plastic plug	1 = standard	X. = current version	-B3.5 = Bypass opening pressure (B6 = 6 bar or B3.5 = 3.5 bar)
MDFF	BH/HC	450 (8"-Length)			E = G1 1/4	5	A = screw plug			
		650 (13"-Length)			F = G1 1/2	10	BM = optical manually resettable			
		900 (16"-Length)				20	C = electrical			
							D = optical/electrical			-V = Viton
										-NEV = no element valve

* for further clogging indicators, please have a look at our Filter Brochure Book, part: clogging indicators

Dimensions



Delivery Time

ca. 4-6 weeks from order entry!

Information

For more information please contact the Technical Sales Department of HYDAC Filtrertechnik or one of the HYDAC Sales Offices in your area.